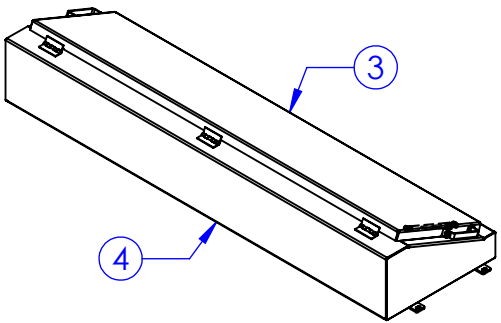
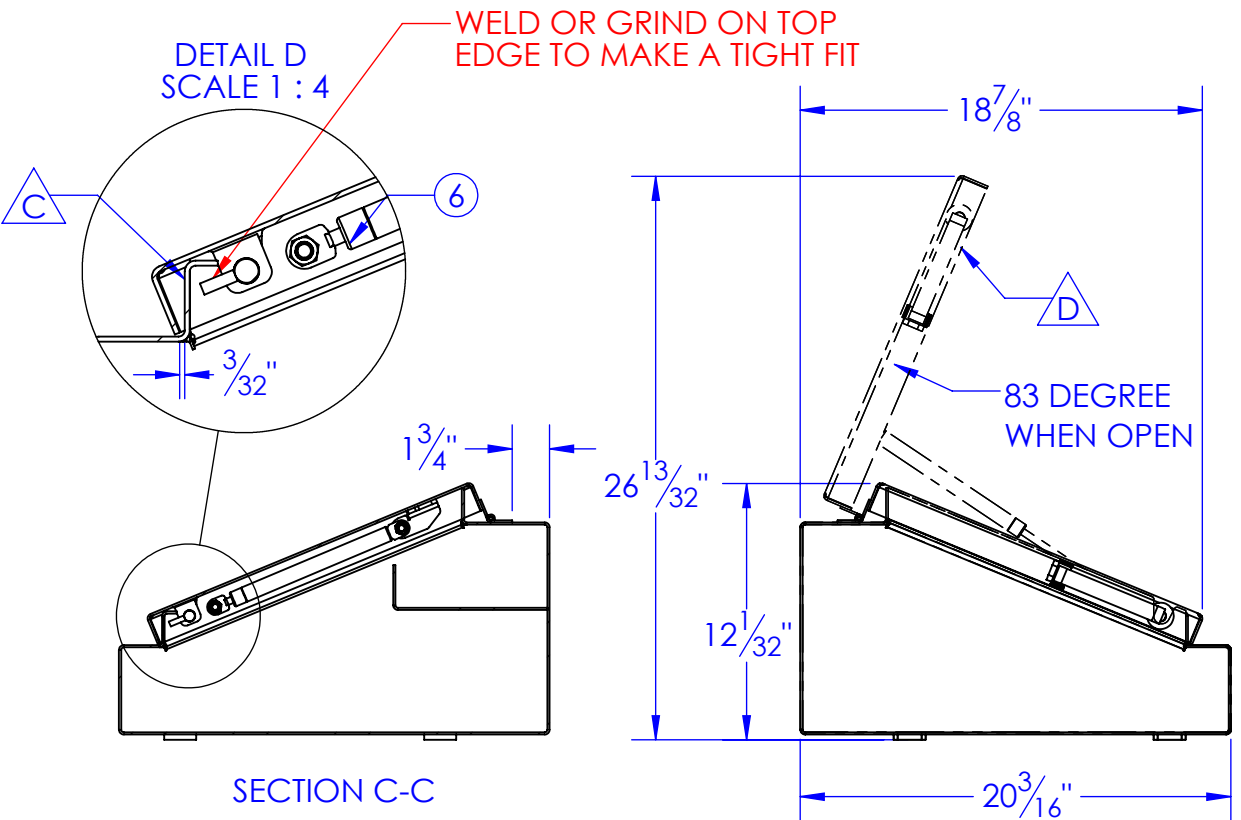
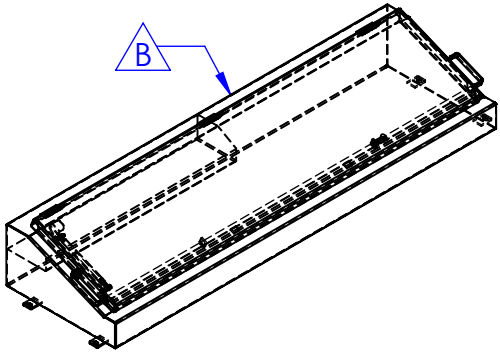
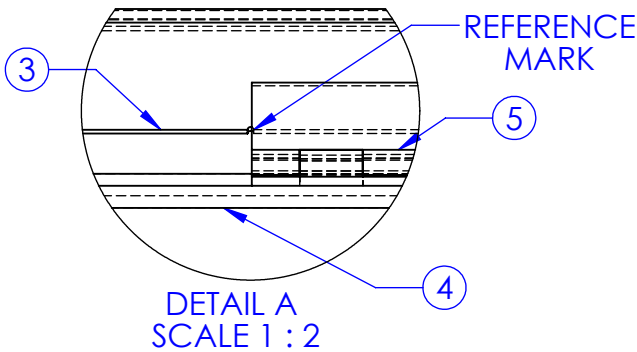
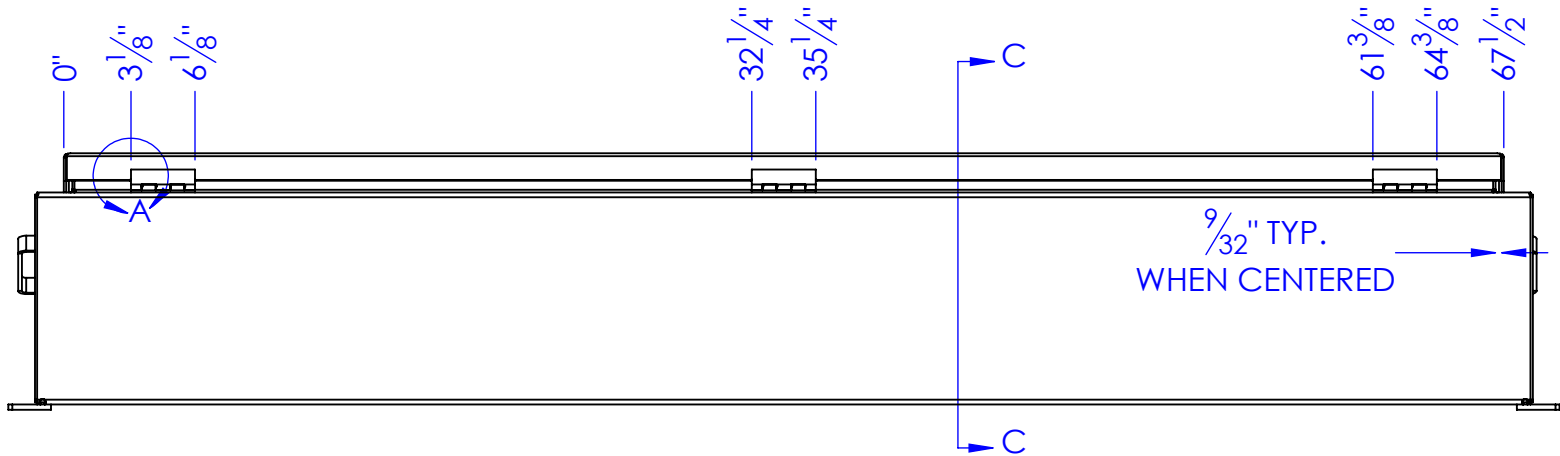
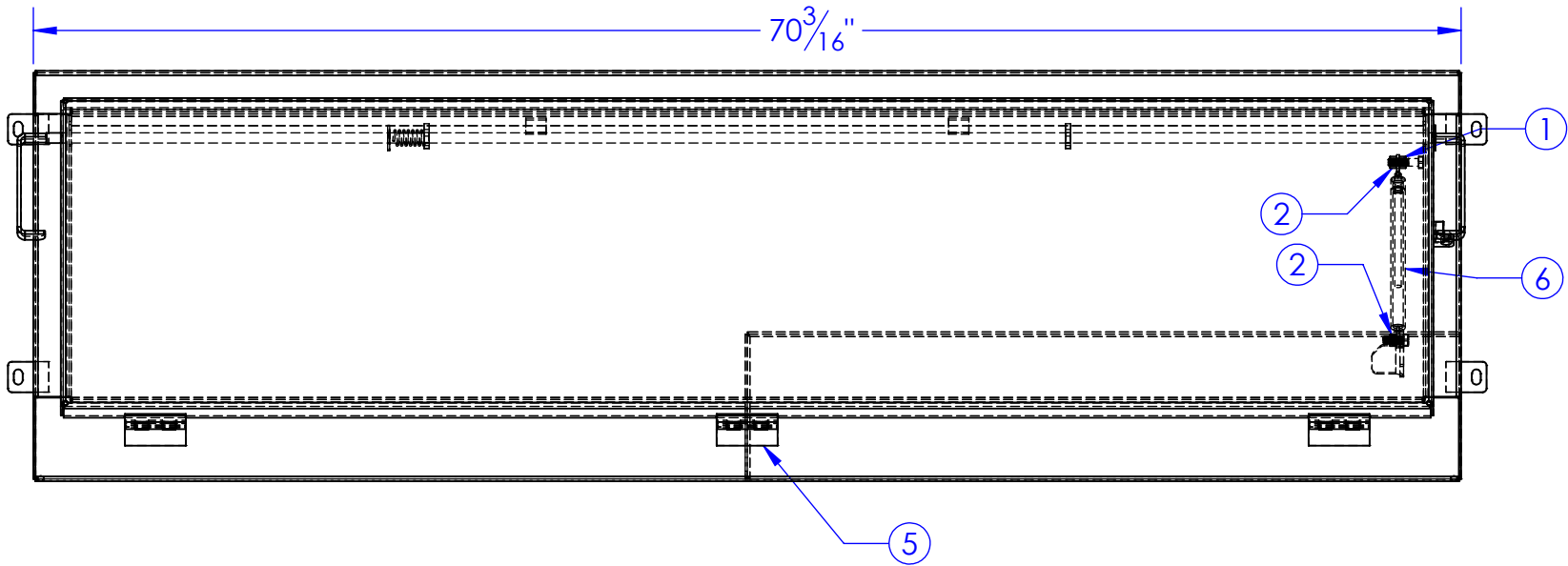
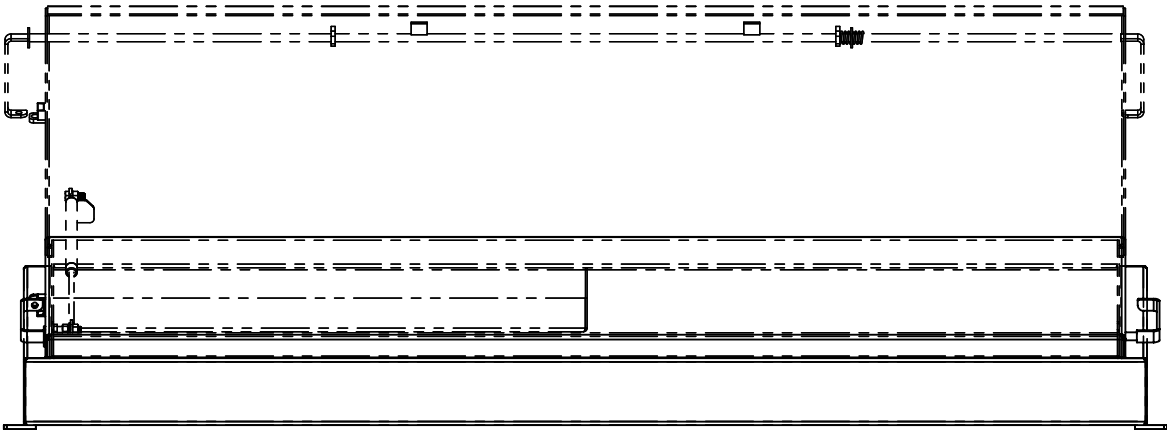


ITEM NO.	PART NUMBER	DESCRIPTION	DRAWING #	QTY:
1	BO-3/8 HN	3/8" HEX NUT	STOCK	1
2	BO-3/8 HNN	3/8"-16 NYLON NUT	STOCK	2
3	FP-WB70-3	LID WELDMENT, WB-122070	90-1100	1
4	FP-WB70-16	BODY WELDMENT, WB122070	90-1104	1
5	HD-HISS S324813	HINGE STAINLESS STEEL SPUN PN	STOCK	3
6	MI-SL2-60 SHOCKS	GAS SHOCK, 15"x9.5"	STOCK	1

NOTE:
DRAWING LOCATION:
M:\Drawings\Heath Information\Triple C\ST TC DWG\90 OPTIONS\0100 WB-122070\1100 WB-122070
ASM. LOCATION:
M:\Drawings\Heath Information\Triple C\ST TC DWG\SW MODELS\FP-WB70




REVISIONS			
REV.	DESCRIPTION	DATE	APPROVED
B	UPDATED TO MATCH 3D MODEL	5/15/2012	
C	UPDATED TO SHOW BROKE PIECE INSTEAD OF 1/2" ANGLE IRON	5/9/2013	
D	UPDATED PRINT WITH NEW OPEN ANGLE	7/9/2022	HP



PROPRIETARY AND CONFIDENTIAL
THE INFORMATION CONTAINED IN THIS
DRAWING IS THE SOLE PROPERTY OF
<INSERT COMPANY NAME HERE>. ANY
REPRODUCTION IN PART OR AS A WHOLE
WITHOUT THE WRITTEN PERMISSION OF
<INSERT COMPANY NAME HERE> IS
PROHIBITED.

UNLESS OTHERWISE SPECIFIED:
DIMENSIONS ARE IN INCHES
TOLERANCES:
FRACTIONAL $\pm 1/16$
ANGULAR: MACH ± 1 BEND \pm
TWO PLACE DECIMAL ± 0.01
THREE PLACE DECIMAL ± 0.005
MATERIAL
DO NOT SCALE DRAWING

		NAME	DATE	P.O. BOX 248, SABETHA KS. 66534 (785) 284-3674 FAX (785) 284-3931	
DRAWN		HEATH	7/9/2022		
PART #					
ASM #		FP-WB70-18			
COMMENTS:				SIZE DWG. NO. REV	
BODY WELDMENT, WB122070				B 90-1106 D D	
SCALE: 1:9		WEIGHT: 156.86		SHEET 1 OF 1	